




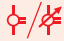
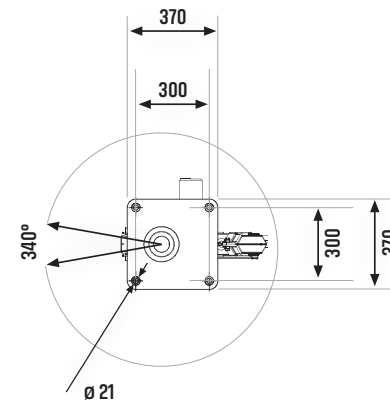
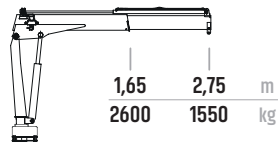


# Basic Line

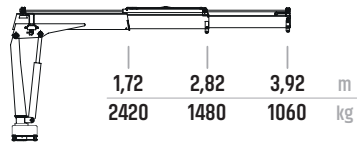
HC 44 T	 tm	 m	 °	 kg	 bar	 l/min
HC 44 T1	3.8	2.75	340	350	230	8
HC 44 T2	3.7	3.9	340	380	230	8
HC 44 T3	3.6	5.0	340	410	230	8
HC 44 T4	3.5	6.1	340	440	230	8



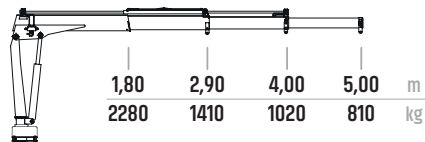
HC 44 T1



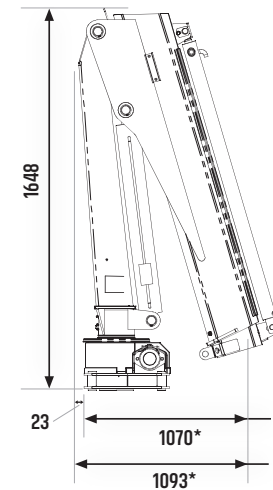
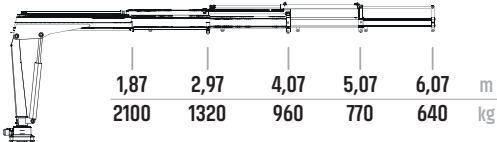
HC 44 T2



HC 44 T3



HC 44 T4



\* Masse für / Dimensions pour HC 44 T1  
 HC 44 T2: 1100 mm / 1123 mm  
 HC 44 T3: 1160 mm / 1183 mm  
 HC 44 T4: 1180 mm / 1203 mm